



James



JAMES-LGR



JAMES-BLK



JAMES-NAV

The model **JAMES** is an ultra comfortable sneaker for men, adapted to the needs of the healthcare professionals. The upper material in mesh is not only very flexible, it also ensures a pleasant climate inside the shoe. The soft insole makes it extremely comfortable. The shoe is a little wider than average which gives your feet more room. So it is very suitable for people with sensitive feet. Thanks to the convenient closing system you can put these shoes on and off in a flash. The slip resistant sole keeps you safe.

The *Oxysport* collection is specially designed to comfortably walk around all day.

www.plsmedical.co.uk

info@plsmedical.co.uk

01721 724018

CE-standard
CE EN 20347 certified.



Soft lining

The front part of the shoe has a soft mousse, for ultimate comfort even when you have sensitive feet.



Coolmax®-lining

The heel and the sole are lined with Coolmax®. This technical material keeps your feet cool and draws perspiration away from the skin.



Shock absorbing

The midsole in EVA guarantees shock absorption.



Convenient closing system

With the convenient closing system, it's very easy to get in and out of the shoe.



Mesh

The upper material is flexible mesh.



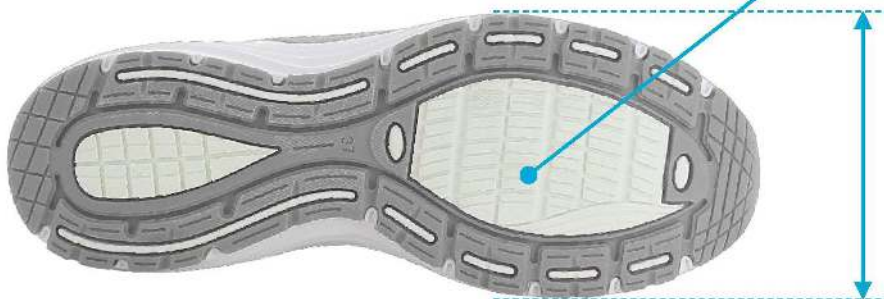
Renewable insole

Renewable insole with Coolmax®. You can easily replace the insole regularly with our ultra comfortable insole OXYFOAM or use your own orthopedic insoles.



Slip resistant SRA

The outsole in TPR provides excellent grip, both on wet and dry floors and complies with the SRA standard.



Extra wide

The shoe is slightly wider than average, so the foot will have more room.

This shoe is very suitable for people with sensitive feet.

Usage

Suitable for those who walk and stand for a long time daily. So recommended for:

- Healthcare professionals
- Nurses and caregivers
- Wellness and beauty center professionals
- Homecare

Sizes

EU	40	41	42	43	44	45	46
UK	6.5	7	8	9	9.5	10.5	11
US	7.5	8	9	10	10.5	11.5	12